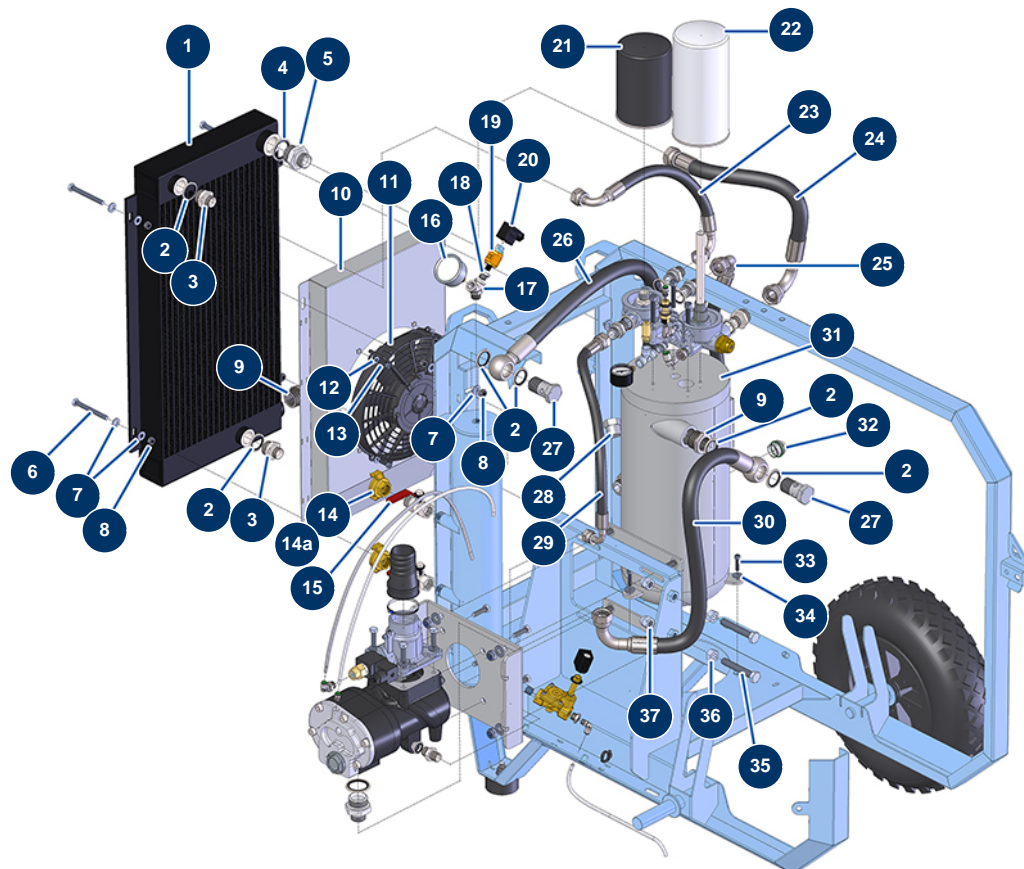


## EUROPRO 150 TH Honda compressor - Pneumatic circuit



### Détails des pièces

Pos.	Référence	Désignation
1	14654	1
2	12573	Steel gasket for 3/4" hollow screw with lip
3	12733	1/2" MaleD x 3/4" MaleD high-pressure nipple
4	12572	Steel gasket for 1" hollow screw with lip
5	12569	3/4" MaleD x 1" MaleD high-pressure nipple
6	12450	THEF 8 x 60 screw
7	80260	ø 8 inox medium washer
8	14075	M 8 inox nut
9	90789	1" MaleC x 3/4 FemaleD low-pressure reduction
10	C22799	10
11	14655	11
12	80259	Ø 6 medium washer
13	90996	6 x 20 inox cylindrical head screw

Pos.	Référence	Désignation
14	70055	1/2" inner threaded quick fit coupling
14a	13577	1/2" inner threaded Geka coupling
15	90023	Red handle valve M1/2" x F1/2"
16	80700	Cylindrical oil 1/4 axial manometer 50 mm 0 to 16 bar
17	30127	Low pressure Y - M3/8" x F3/8" x F3/8"
18	90240	1/4" MaleC x 1/8" FemaleD low-pressure reduction
19	14677	E150 TH compressor NC pressure switch
20	13528	12 VDC coil connector for electro-pneumatic distributor - CP 60
21	14675	E150 TH compressor oil filter
22	14674	E150 TH compressor oil/air separator filter
23	14716	Filter block outlet /oil cooler high inlet hose for compressor E 150
24	14714	Air filter block/air radiator high inlet hose for compressor E 150
25	14713	Radiator low outlet/filter block inlet hose for compressor E 150
26	14718	Air radiator low outlet/air reserve hose for compressor E 150
27	13307	3/4 HP drilled head screw
28	90817	3/4" low-pressure male plug
29	14715	Screw group /oil filter block for compressor E 150
30	14717	Screw group/oil separator tank return for coompressor E 150
31	14561	31
32	103522	Oil level eye with seal E 100
33	80614	6 x 25 inox cylindrical head screw
34	30291	ø 6 large washer
35	13245	35
36	30071	Nut M 12
37	90128	M 12 cap nut