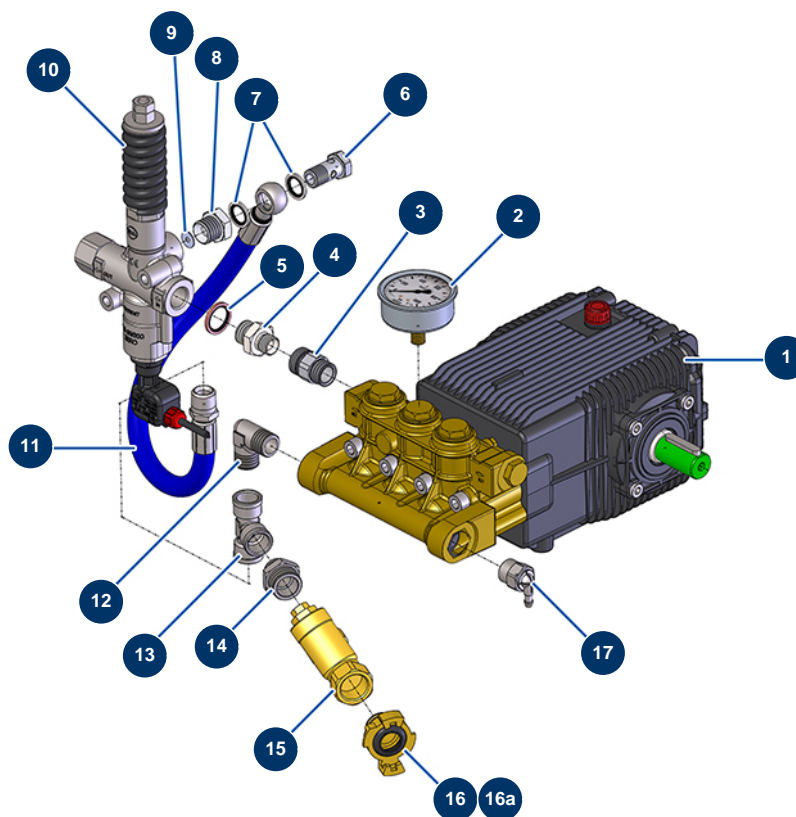


EUROPROLAV 22-500 TH washer - Pump



Détails des pièces

Pos.	Référence	Désignation
1	12673	22 litres 500 bars pump - SHP 22.50 N - 1450 rpm
2	12688	Cylindrical oil 1/4 axial manometer 63 mm 0 to 1000 bar
3	12680	Male quick coupling M24-150 M x 1/2 M - 500 bar
4	90872	1/2" MaleD x 3/8" MaleD high-pressure nipple
5	91030	1/2 copper gasket for hollow screw
6	91033	3/8 drilled head screw
7	91031	Steel gasket for hollow screw with 3/8 lip
8	12895	3/8" FemaleD x 1/2" MaleD high-pressure nipple
9	14416	Insert ø 4,5 mm By-pass 500 bar with start-up contact
10	12674	500 bars bypass
11	10966	Pump bypass return hose 22-500, Voluclean 200, 250 & 300
12	11646	Elbow BP 90° 1/2" MaleC x 1/2" MaleC
13	12105	F1/2" x F1/2" x F1/2" low pressure T

Pos.	Référence	Désignation
14	11891	1/2" MaleD x 3/4" MaleD low-pressure nipple
15	12734	3/4 F x 3/4 F strainer
16	13573	3/4" outer threaded Geka coupling
16a	70030	Standard quick fit coupling gasket
17	90295	1/2" thermostatic valve