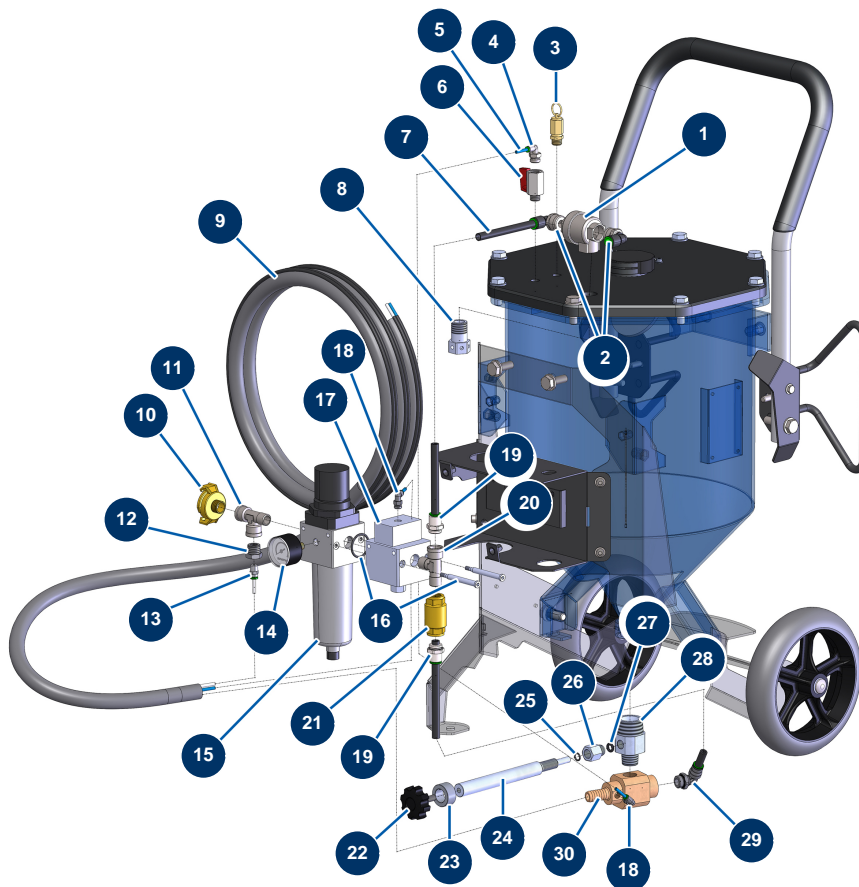


## Sandblaster SANDBLASTPRO 30 L - Pneumatic circuit



### Détails des pièces

Pos.	Référence	Désignation
1	14693	1/2" quick exhaust valve
2	14691	M1/2 ø 10 cylindrical elbow push-in connector
3	80097	1/4" certified outer threaded safety valve 11 bar
4	70407	Sandblaster M1/4" x Ø 4 revolving elbow push-in connector
5	11157	
6	30135	1/4" mini lux valve
7	30405	Calibrated polyurethane tube ø 7,5 x 10 black by the metre
8	M10777	8
9	14828	Complete hose 8 metres for SandblastPro mini sandblaster
10	13571	3/8" outer threaded Geka coupling
11	12530	M3/8" x F3/8" x F3/8" low pressure T
12	90241	3/8" MaleC x 1/8" FemaleD low-pressure reduction
13	11155	M1/8 ø 4 push-in connector

Pos.	Référence	Désignation
14	80023	Axial manometer 1/8 conical 40 mm 0 to 10 bar
15	90756	Superimposed 3/8" regulator filter
16	14688	Mini sandblaster 30 Litres 3/8" air circuit cutting valve assembly kit
17	14686	Mini sandblaster 30 Litres air circuit cutting valve
18	70408	Sandblaster M1/8" x Ø 4 revolving elbow push-in connector
19	14779	M3/8 ø 10 push-in connector
20	14783	M3/8" x M3/8" x F3/8" low pressure T
21	14782	
22	11514	Plastic thumb wheel M8 x 20
23	M10750	
24	M10746	
25	1032110	8 x 1,5 VITON O-ring for 400 series spray-gun
26	M10743	
27	15226	
28	M10739	
29	14778	M3/8 ø 10 cylindrical elbow push-in connector
30	M10749	