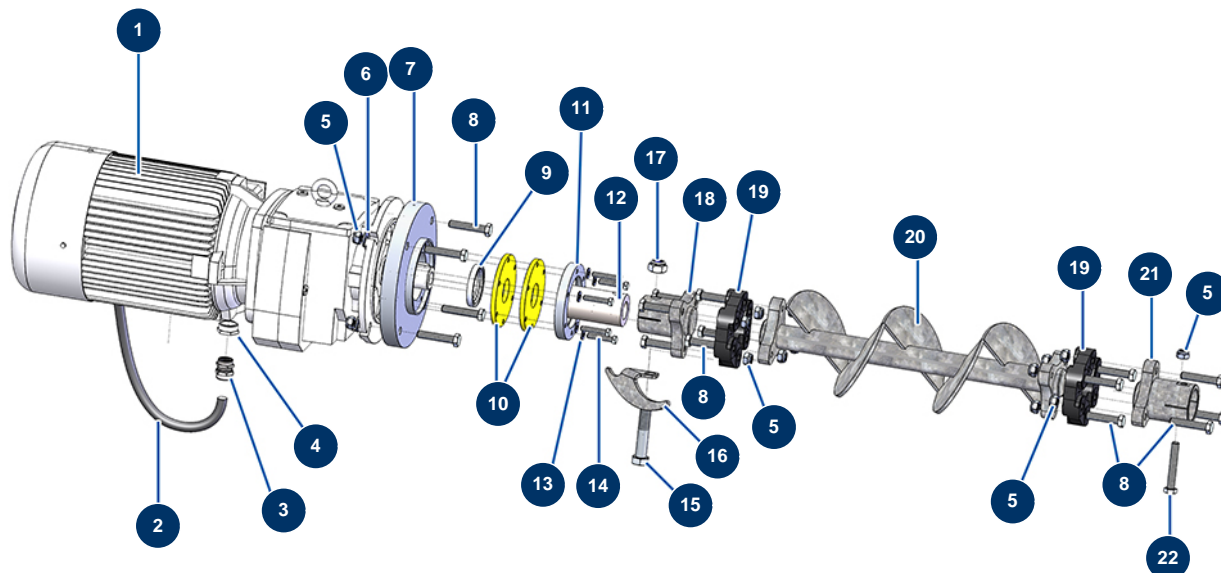


COMPACT-PRO 100 Tri liquid floor screed machine - Transmission



Détails des pièces

| Pos. | Référence | Désignation |
|------|-----------|--|
| 1 | 20022 | Geared motor 7,5 kW - T132 - R10 - 1400 rpm - 400V |
| 2 | 20041 | H07RNF 4G4 electrical cable by the metre |
| 3 | 20043 | M 25 grey plastic cable gland |
| 4 | 12814 | Cable gland reduction M 32-25 |
| 5 | 10051 | M 12 nylstop nut |
| 6 | 14102 | ø 12 inox medium washer |
| 7 | 20057 | ø 250 mm motor flange for X-PRO machine |
| 8 | 20038 | 12 x 65 THPF screw |
| 9 | 20042 | Spi seal 55 x 72 x 10 |
| 10 | 20058 | X-PRO machine tank bottom gasket |
| 11 | 20059 | X-PRO machine seal flange |
| 12 | 20056 | X-PRO 140, 200 & CP 100 drive shaft |
| 13 | 80260 | ø 8 inox medium washer |

| Pos. | Référence | Désignation |
|------|-----------|--|
| 14 | 11798 | THEF 8 x 45 screw |
| 15 | 20040 | 18 x 100 THPF screw |
| 16 | C22881 | |
| 17 | 20039 | M 18 nylstop nut |
| 18 | 20053 | X-PRO machine motor coupling |
| 19 | 14661 | Transmission shaft elastic coupling - X-PRO D140 |
| 20 | 20054 | X-PRO D140, CP 55 & 100 tank bottom drive shaft |
| 21 | 20055 | X-PRO machine rotor coupling |
| 22 | 20047 | THPF screw 12 x 80 raw steel 12.9 |