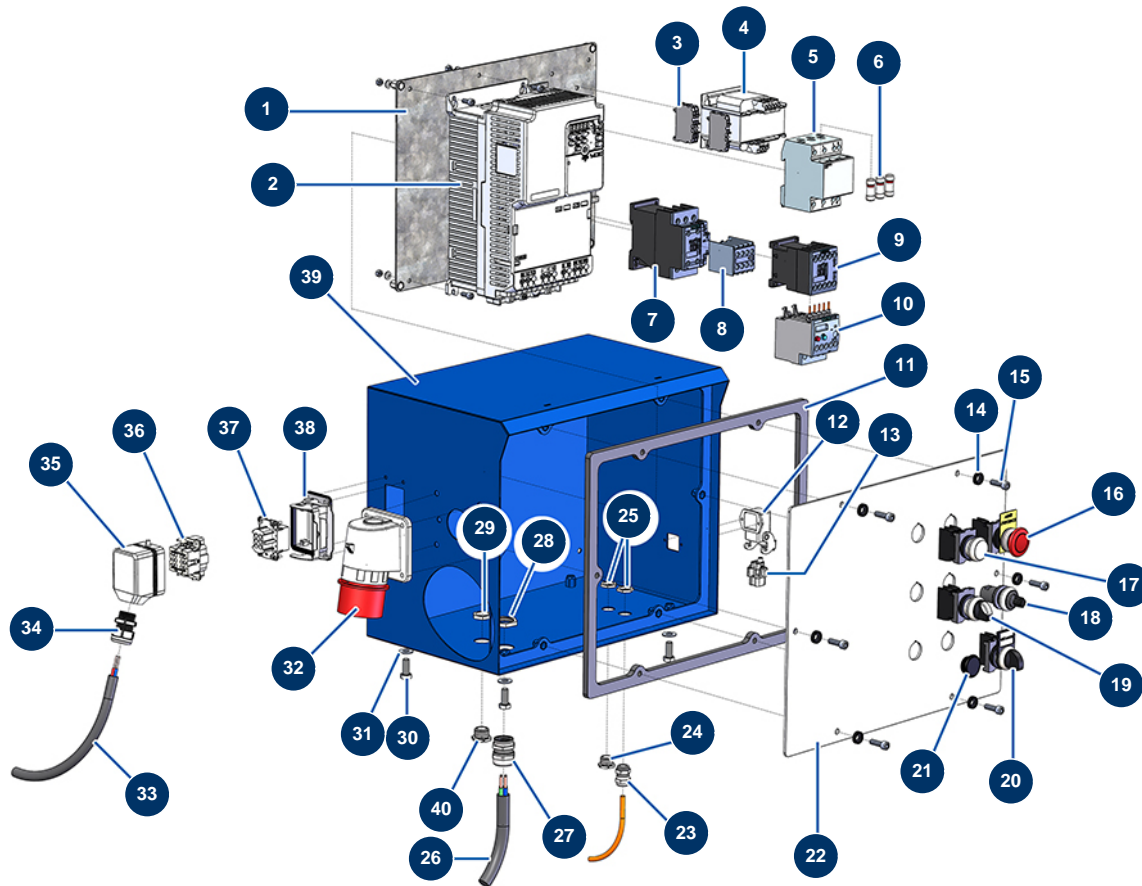


COMPACT-PRO 100 Tri liquid floor screed machine - Electrical box



Détails des pièces

Pos.	Référence	Désignation
1	C23064	1
2	20146	
3	MI3C05050800	5x20 fuse holder
4	MI3C00500402	70/80VA 400/42/24/15V transformer
5	12149	32 A Tetra fuse holder
6	14637	Fuse 32 A AM 10.38
7	20155	24 VAC - 4NO 32A coil contactor
8	20076	8
9	11918	Coil contactor 24 Volt AC
10	20077	Thermal protection 0.4-0.6A DILEM10 contactor
11	20025	X-PRO E50 & E100 electrical box gasket
12	12543	Insulating bend socket base 3p + G - 1 lever
13	11914	Female insert 4p + G

Pos.	Référence	Désignation
14	80573	Hollow washer Ø 6
15	90153	6 x 30 cylindrical head screw
16	90038	Complete EMERGENCY STOP button Ø 22
17	30034	Complete ON button
18	80645	Spraying machine complete potentiometer from MARCH 2003
19	90731	3-position button
20	30025	2-position button
21	12022	Box door shutter button
22	C22879	22
23	90600	16 nickel plated waterproof cable gland
24	80042	Hydraulic oil
25	11327	Cable gland locknut of M16
26	20041	H07RNF 4G4 electrical cable by the metre
27	20043	M 25 grey plastic cable gland
28	20050	M 25 cable gland nut
29	20051	M 20 grey plastic cable gland nut
30	11544	THEF 8 x 25 screw
31	30292	ø 8 inox large washer
32	20174	
33	30018	H07RNF 4G1.5 electrical cable by the metre
34	30332	13mm nickel plated sealed cable gland
35	20069	
36	20066	06 P + T male insert
37	20067	06 P + T female insert
38	20065	
39	C22876	39
40	80443	IM 20 electric plug