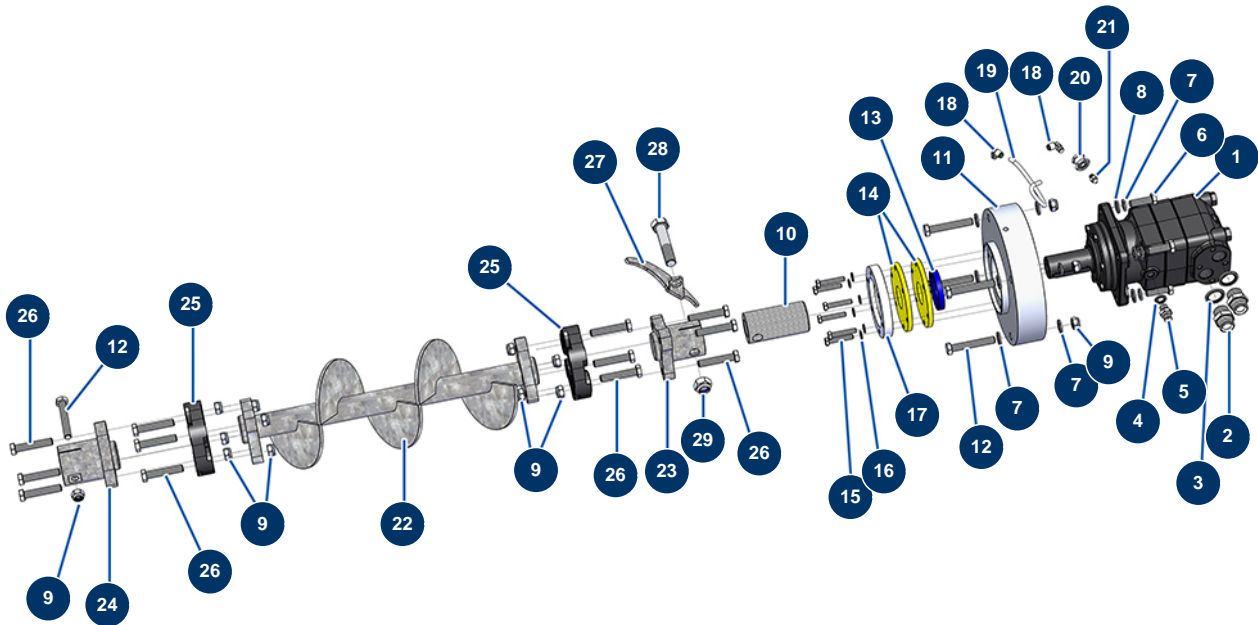


## X-PRO D140 liquid screed machine - Transmission



### Détails des pièces

Pos.	Référence	Désignation
1	20206	OMT 250 X-PRO D140 hydraulic motor
2	90774	3/4" MaleD x 3/4" MaleD high-pressure nipple
3	12573	Steel gasket for 3/4" hollow screw with lip
4	91016	Steel gasket for hollow screw with 1/4 lip
5	90703	1/4" MaleD x 1/4" MaleD high-pressure nipple
6	12928	THEF 12 x 40 screw
7	30281	ø 12 inox narrow washer
8	12462	Grower washer ø 12
9	10051	M 12 nylstop nut
10	20056	X-PRO 140, 200 & CP 100 drive shaft
11	20207	OMT 250 X-PRO D140 hydraulic motor flange
12	20047	THPF screw 12 x 80 raw steel 12.9
13	20042	Spi seal 55 x 72 x 10

Pos.	Référence	Désignation
14	20058	X-PRO machine tank bottom gasket
15	11798	THEF 8 x 45 screw
16	30256	∅ 8 inox narrow washer
17	20059	X-PRO machine seal flange
18	30124	Corrugated Legris coupling M1/8" Ø 6
19	30403	Calibrated polyurethane tube ∅ 4 x 6 black by the metre
20	20159	
21	20044	1/8" M straight lubricator
22	20054	X-PRO D140, CP 55 & 100 tank bottom drive shaft
23	20053	X-PRO machine motor coupling
24	20055	X-PRO machine rotor coupling
25	14661	Transmission shaft elastic coupling - X-PRO D140
26	20038	12 x 65 THPF screw
27	C22881	
28	20040	18 x 100 THPF screw
29	20039	M 18 nylstop nut