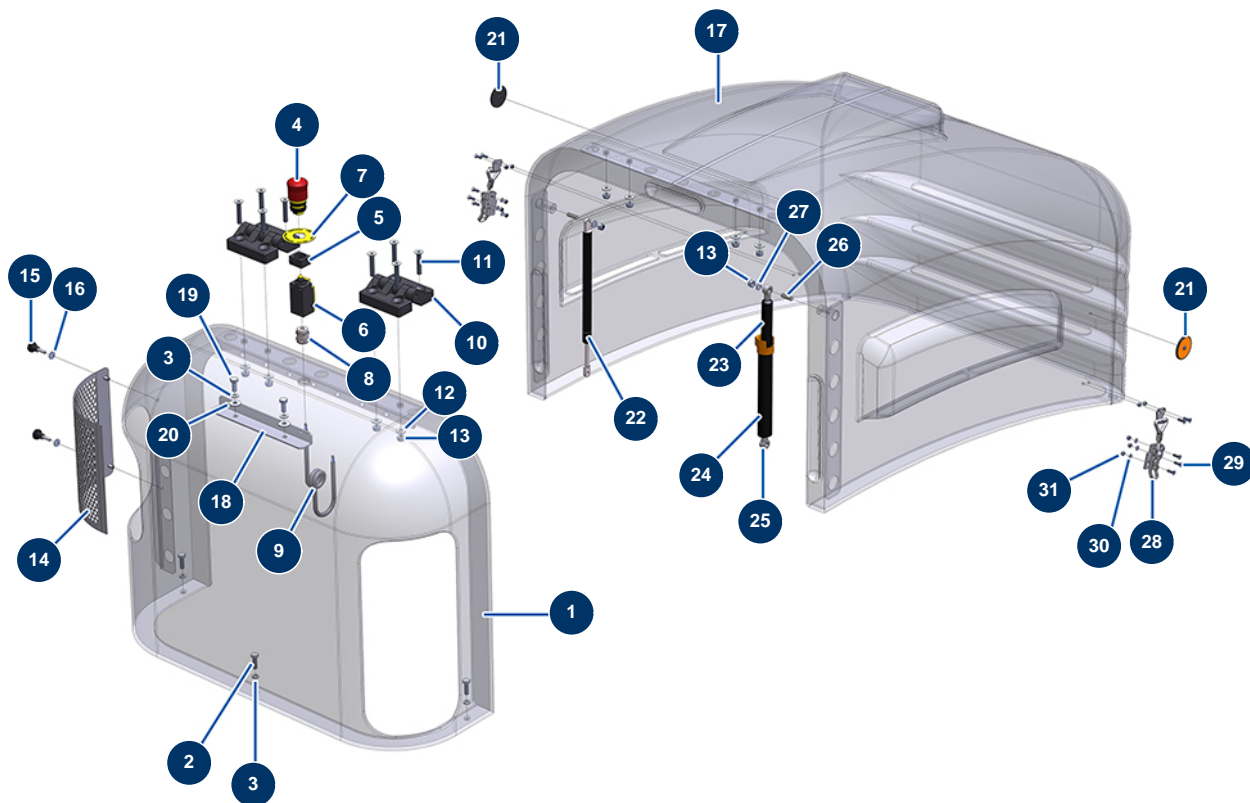


## X-PRO D140 liquid screed machine - Bodywork



### Détails des pièces

Pos.	Référence	Désignation
1	14413	CP 60, 70, 80 & 120 small model fixed bonnet
2	11544	THEF 8 x 25 screw
3	80269	Grower washer ø 8
4	90727	Hook emergency stop button - CP 60
5	12664	Security switch adapter / emergency stop button - C.P 60
6	12663	Push safety switch - C.P. 60
7	12824	Round sticker "Emergency stop" for CP 60
8	80448	M 20 waterproof cable gland
9	11973	Electrical cable H05VVf 2x1 / sold by the meter
10	12797	Hood hinge - C.P 60
11	13620	8 x 45 countersunk head screw
12	12451	
13	90127	M 8 nylstop nut

Pos.	Référence	Désignation
14	C20986	CP 60 hood removable lateral grid
15	12396	Plastic thumb wheel M5 x 20
16	30290	∅ 5 large washer
17	14412	CP 60, 70, 80 & 120 large model mobile bonnet
18	C20866	Removable angle for hood reinforcement CP60 V17
19	30273	THEF 8 x 20 screw
20	30292	∅ 8 inox large washer
21	12361	Round & orange reflector - C.P 60
22	80209	Mobile hood gas spring - C.P 60
23	13239	∅ 10 gas spring for CP 60 movable cover
24	14580	
25	13240	
26	12846	M8 x 25 stud bolt
27	30256	∅ 8 inox narrow washer
28	13111	Large hood locking adjustable locking clamp - C.P 60
29	90130	5 x 16 countersunk head screw
30	70085	∅ 5 narrow washer
31	70086	M 5 nylstop inox nut