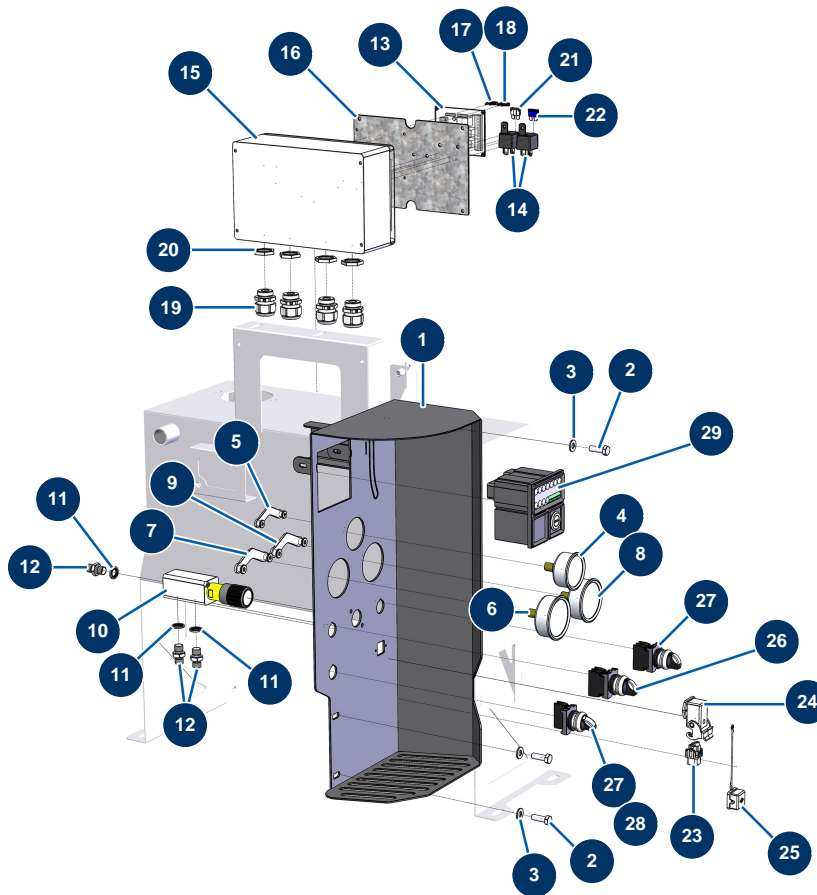


X-PRO D140 liquid screed machine - Control panel



Détails des pièces

Pos.	Référence	Désignation
1	C23015	1
2	11544	THEF 8 x 25 screw
3	30292	ø 8 inox large washer
4	20198	50 mm axial manometer 1/4" cylindrical - 0 to 160 bar
5	20199	Fixing U-blot for manometer Ø 50
6	13207	Cylindrical 1/4 axial manometer 63 mm 0 to 250 bar - C.P 60
7	80195	Fixing U-blot for manometer Ø 63
8	20227	Cylindrical 1/4" axial manometer 63 mm 0 to 25 bar - X-PRO D
9	20258	
10	20028	M4PV37 pump 2-16 bar pressure regulator
11	91016	Steel gasket for hollow screw with 1/4 lip
12	90703	1/4" MaleD x 1/4" MaleD high-pressure nipple
13	12988	Safety electronic card - C.P 60

Pos.	Référence	Désignation
14	20378	Relay 12V DC with fuse
15	20228	250 x 160 x 90 plastic box with transparent lid
16	20229	
17	13079	Standard US 2A fuse - CP 60
18	13080	Standard US 5A fuse - CP 60
19	20043	M 25 grey plastic cable gland
20	20050	M 25 cable gland nut
21	20251	US 15A standard fuse
22	20252	US 25A standard fuse
23	11914	Female insert 4p + G
24	12543	Insulating bend socket base 3p + G - 1 lever
25	12535	2 PIV cover with MIXPRO 14 gasket
26	11338	COMPACT-PRO complete REVERSE-AUTO-MANU button
27	11339	Complete START-STOP button for COMPACT-PRO 30 compressor
28	30028	Green single closed contact
29	30882	CP 60 petrol engine command panel