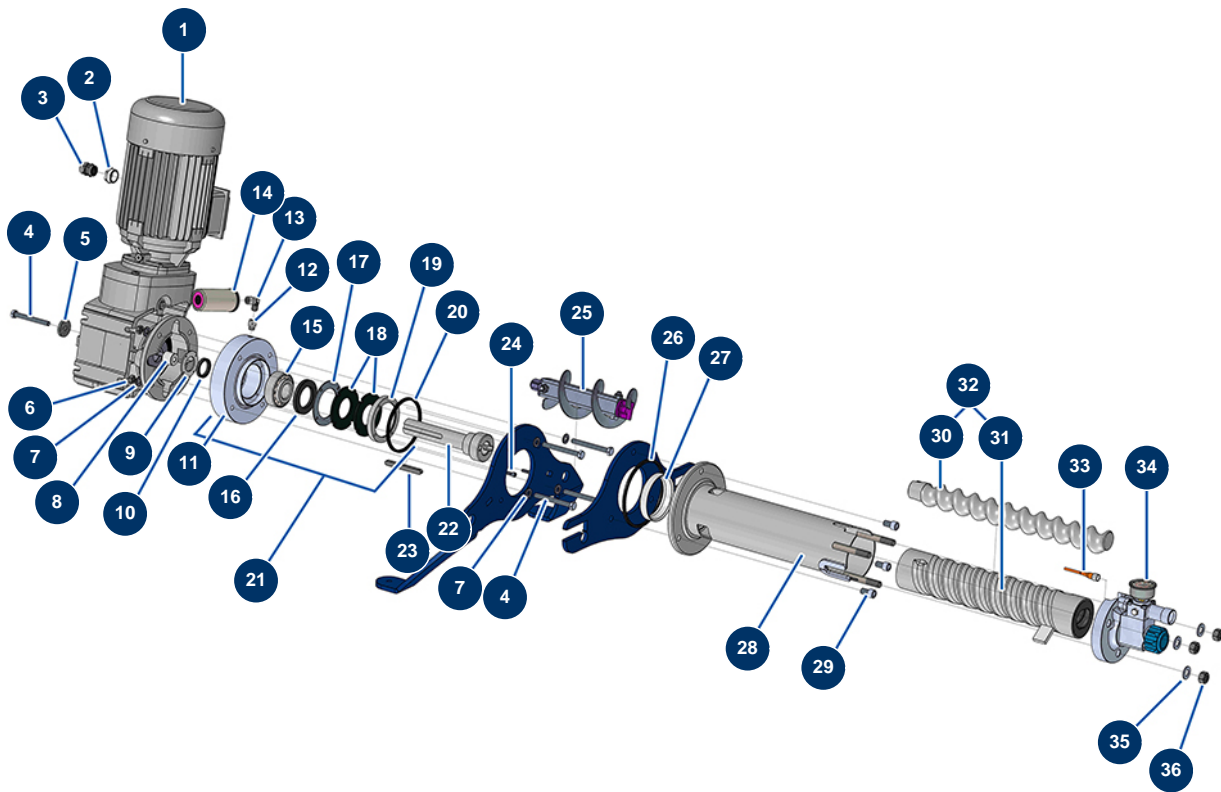


JETPRO 160 complete atomizer - 400V TETRA - Transmission (from 07/2021)



Détails des pièces

Pos.	Référence	Désignation
1	12788	Geared motor 4 kW - T112 - R12,84 - 1400 rpm - 400V
2	12814	Cable gland reduction M 32-25
3	80449	Watertight cable gland of M 25
4	12164	THEF 10 x 100 screw
5	C22885	5
6	13978	M10 inox nut
7	80261	ø 10 inox medium washer
8	M10444	Ring for JETPRO, JETBAG 160
9	C21066	Ø 61 back seal holding washer for JETPRO
10	13219	Spi seal 35 x 45 x 7
11	M10498	11
12	90773	1/4" MaleD x 1/4" FemaleD low-pressure nipple
13	12104	45° inox low-pressure elbow FemaleD 1/4 x MaleD 1/4

Pos.	Référence	Désignation
14	90639	Automatic greaser
15	13660	35 x 80 x 31 thrust bearing for JETPRO
16	70107	Spi seal 50 x 80 x 8 for 24P,24PT, MPE300, COMPACT-PRO 30
17	C21514	17
18	12507	Bottom of tank seal for JETPRO 80
19	M10222	Flange seal for JETPRO 80 & 120
20	12506	4-lobes seal for JETPRO 80 flange
21	13580	SEW EUROPRO JETPRO, JETBAG 160 motor complete flange
22	M10442	Drive shaft for JETPRO & JETBAG 160
23	13306	10 x 8 x 100 parallel key with round end
24	90996	6 x 20 inox cylindrical head screw
25	14869	JETPRO 160 reinforced connecting rod
26	12815	4-lobes seal for JETPRO / JETBAG 120 flange
27	M10443	27
28	13319	Stator holding kit for JETPRO, JETBAG 160
29	12498	12 x 30 cylindrical head screw
30	MI7009107600	EUROPRO JET 4 pump chromed rotor
31	MI3F00529500	EUROPRO JET 4 BOOSTER-80SH pump stator
32	30792	EUROPRO JET 4 pump BOOSTER rotor/stator kit
33	12409	M12 straight female connector with 2m cable
34	14908	Nez pompe alu complet JETPRO 160 nouvelle version
35	30286	ø 14 inox narrow washer
36	10036	M 14 nut