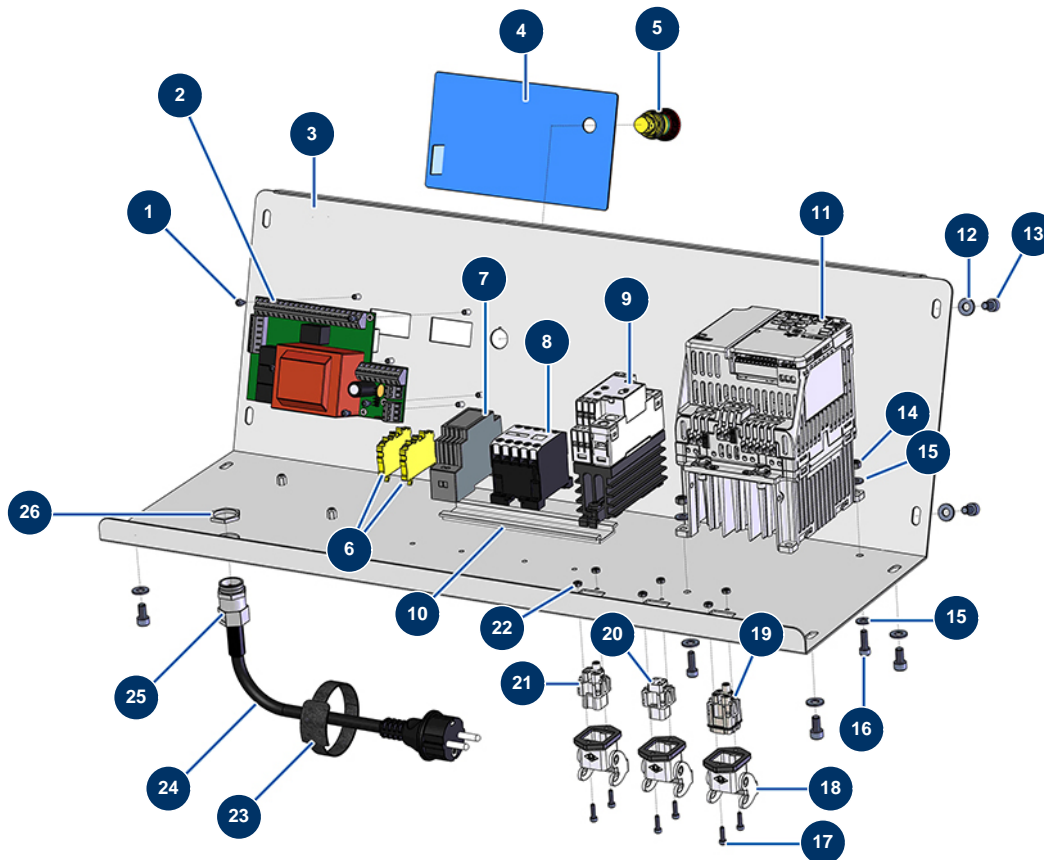


## TURBISOL 200 blowing machine - Electrical box (from 10/2021)



### Détails des pièces

Pos.	Référence	Désignation
1	13329	3 x 6 cylindrical head screw
2	30677	TURBISOL 112 & TRAMONTANE 2 blowing machine electronic card
3	C22962	
4	13013	TURBISOL front with membrane
5	13015	Hanging EMERGENCY STOP button Ø16
6	30038	Yellow and green conductive block 6 mm <sup>2</sup>
7	12711	Supply 230V-24VDC-15W
8	11918	Coil contactor 24 Volt AC
9	14867	30A/230V dimmer for TURBISOL 164/200
10	10265	
11	80458	Inverter 230 V - 1,5 kW
12	80259	Ø 6 medium washer
13	12112	6 x 12 cylindrical head screw

Pos.	Référence	Désignation
14	10038	M 6 nut
15	11737	∅ 5 inox medium washer
16	90160	5 x 16 cylindrical head screw
17	12249	3 x 12 cylindrical head screw
18	11915	Blowing machine insulating support 3 p + T - 1 lever
19	11913	Blowing machine male insert 4 p + T
20	11912	Blowing machine female insert 3 p + T
21	11914	Female insert 4p + G
22	310016	M 3 nut
23	12410	Self-gripping collar with loop 12,7 x 228 mm
24	90214	Power cable with molded plug 3G 2,5 mm <sup>2</sup>
25	80451	Brass cable gland of 13 for power cable
26	30060	11mm cable gland nut