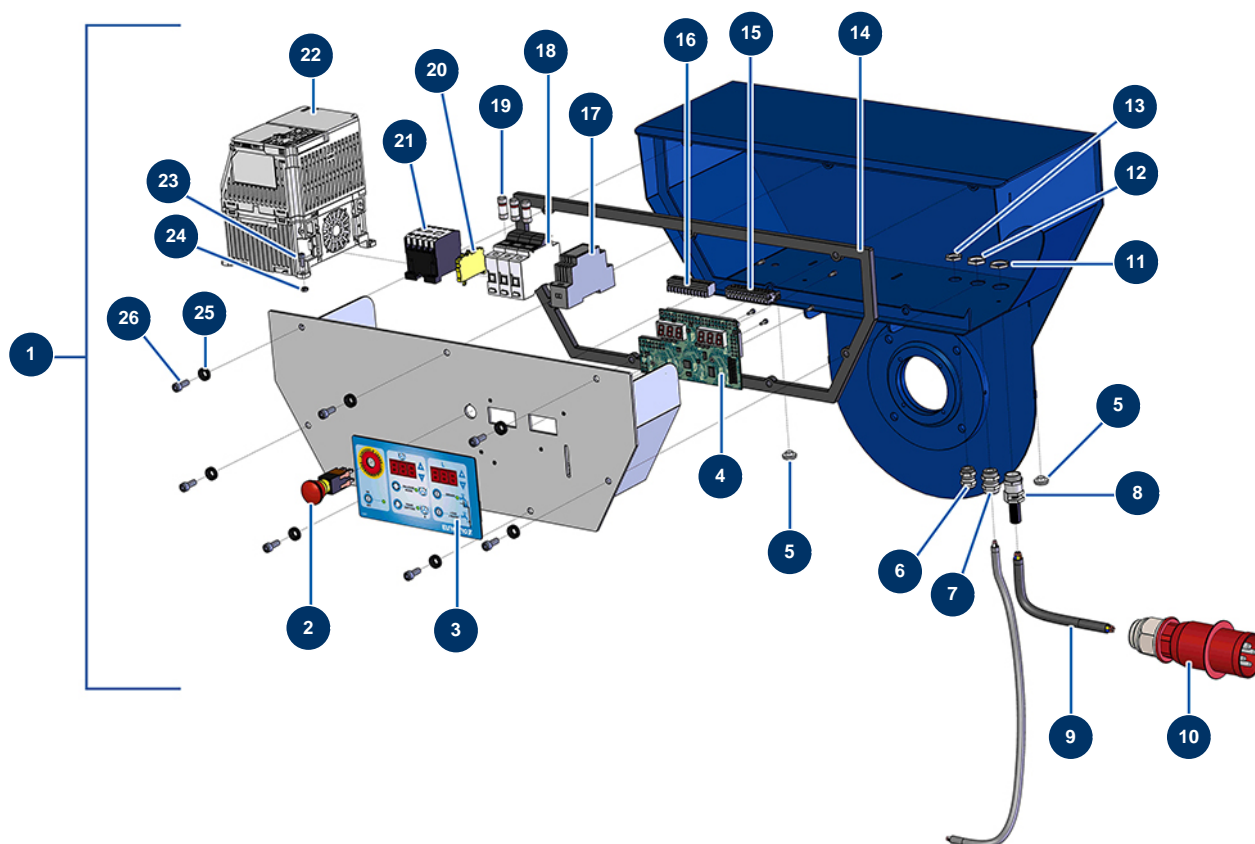


MIXPRO 100 - 400V TETRA sequential mixer - Electrical box



Détails des pièces

| Pos. | Référence | Désignation |
|------|-----------|--------------------------------------------------------------|
| 1 | 14273 | Complete membrane electrical box for MIXPRO 100 - 400V TETRA |
| 2 | 13015 | Hanging EMERGENCY STOP button Ø16 |
| 3 | 13007 | IDEAL MIXER front with membrane |
| 4 | 30673 | C.P IDEAL MIXER & MIXPRO 100 electronic card |
| 5 | 80397 | Water exhaust cork for electrical box |
| 6 | 80445 | Watertight cable gland of M16 |
| 7 | 30040 | Nickel plated watertight cable gland of 11 CEM |
| 8 | 80451 | Brass cable gland of 13 for power cable |
| 9 | 13146 | H07RNF 5G2.5 electrical cable by the metre |
| 10 | 13147 | Male electrical plug 3P + N + G 16A |
| 11 | 30054 | Cable gland locknut of 13 |
| 12 | 30333 | Cable gland locknut of 11 CEM |
| 13 | 11327 | Cable gland locknut of M16 |

| Pos. | Référence | Désignation |
|------|-----------|-----------------------------------------------------|
| 14 | 12138 | EUROPRO MIXPRO 100 electrical box gasket |
| 15 | 11772 | 12 pins female connector |
| 16 | 11771 | 12 pins male connector |
| 17 | 12711 | Supply 230V-24VDC-15W |
| 18 | 12149 | 32 A Tetra fuse holder |
| 19 | 12150 | Fuse 16 A AM 10.38 |
| 20 | 30038 | Yellow and green conductive block 6 mm ² |
| 21 | 11918 | Coil contactor 24 Volt AC |
| 22 | 12945 | Inverter 400 V - 4 KW GA |
| 23 | 12444 | 4 x 12 cylindrical head screw |
| 24 | 10038 | M 6 nut |
| 25 | 80573 | Hollow washer Ø 6 |
| 26 | 90157 | M6 x 16 cylindrical head screw - CP 60 |