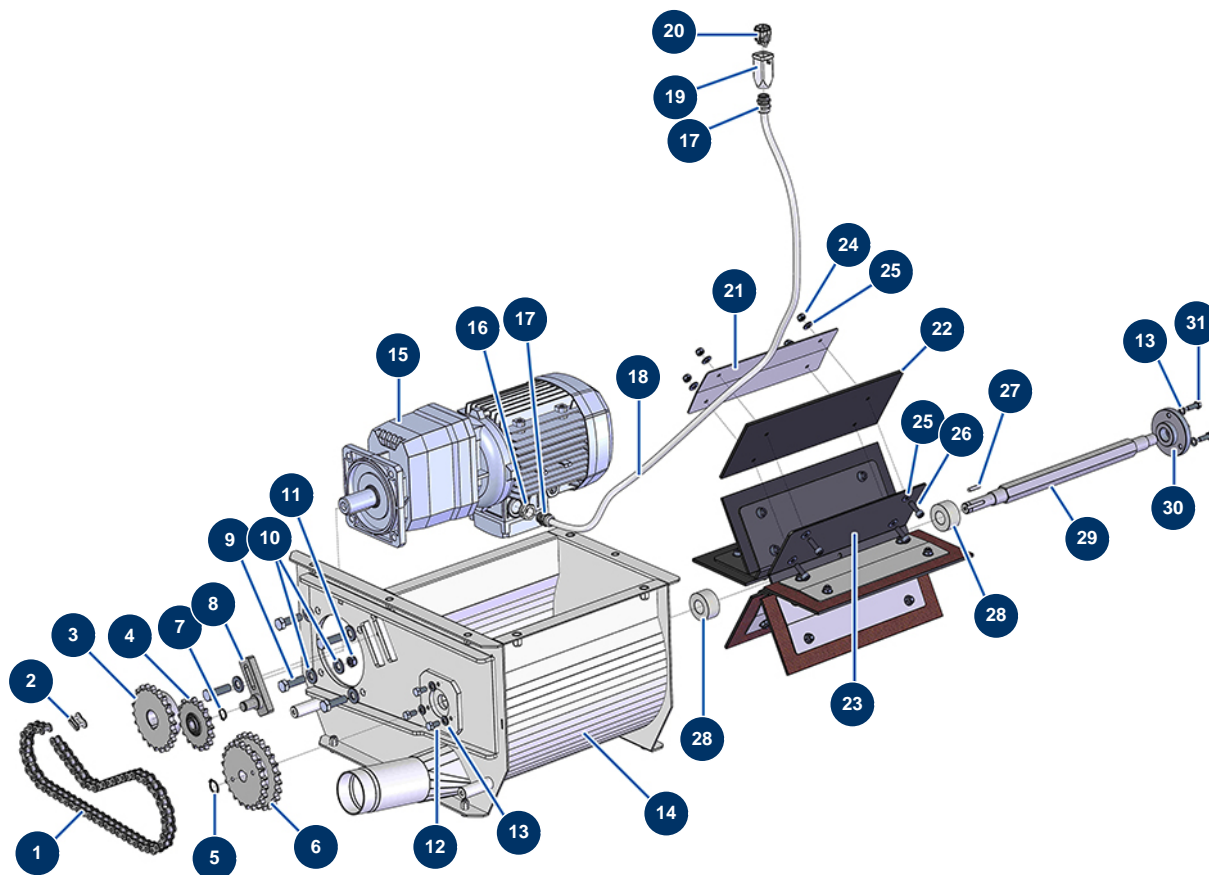


## TURBISOL 200 blowing machine - Transmission (from 10/2021)



### Détails des pièces

Pos.	Référence	Désignation
1	14722	
2	14723	
3	14724	22 teeth single sprocket pitch 15,875 for TURBISOL 200 blowing machine
4	14727	17 teeth single sprocket pitch 15,875 for TURBISOL 200 blowing machine
5	12318	Ø 20 outer circlip
6	C23247	
7	11991	Ø 16 outer circlip
8	C22894	
9	12928	THEF 12 x 40 screw
10	14102	ø 12 inox medium washer
11	13981	M 10 nylstop inox nut
12	30295	THEF 8 x 16 screw
13	30256	ø 8 inox narrow washer

Pos.	Référence	Désignation
14	C22922	14
15	12059	Geared motor 1,5 kW - TC322 - R18,1 - 1400 rpm - 400V
16	80446	Cable gland reduction M 25-11
17	30082	Nickel plated watertight cable gland of 11
18	11964	H05VVF 4G1 grey electrical cable by the metre
19	11916	Blowing machine insulating cover 3 p + T
20	11913	Blowing machine male insert 4 p + T
21	C22957	
22	14732	TURBISOL 200 distributor rubber paddle
23	C22956	TURBISOL 200 hexagonal rotating distributor
24	13980	M 8 nylstop inox nut
25	80260	ø 8 inox medium washer
26	12783	8 x 25 cylindrical head screw
27	12000	6 x 6 x 29 parallel key with round end
28	14760	Felt gasket Ø 20 x 40 for TURBISOL 200 blowing machine
29	M10728	TURBISOL 200 distributor shaft
30	M10709	
31	11544	THEF 8 x 25 screw