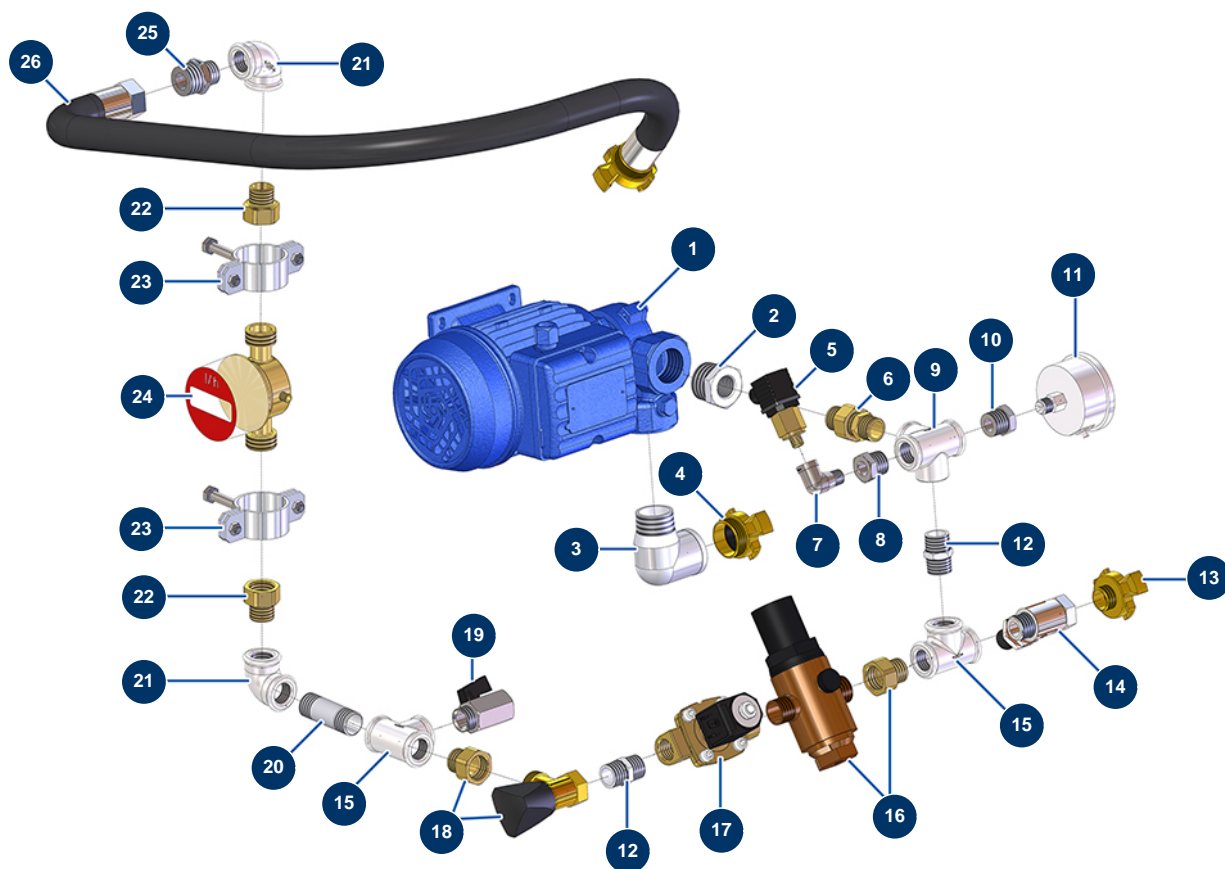


MIXPRO 28 - 3 kW complete floor-screed continuous mixing machine - Water group



Détails des pièces

| Pos. | Référence | Désignation |
|------|--------------|--|
| 1 | MI3D00703001 | 230V MONO electropump |
| 2 | MI3G00524105 | 1" MaleC x 1/2" FemaleC galvanised reduction |
| 3 | MI3G00509204 | 90° galvanised elbow 1" MaleC x 1" FemaleC |
| 4 | 13574 | 1" GEKA outer threaded coupling |
| 5 | MI3G00402103 | Water pressure switch |
| 6 | 30132 | Union coupling 1/2 |
| 7 | 30121 | 90° low-pressure elbow 1/4 MaleC x 1/4 FemaleD |
| 8 | MI3G50300100 | 1/2" MaleC x 1/4" FemaleC galvanised reduction |
| 9 | MI3G00522302 | Galvanised X 4 x 1/2" Female |
| 10 | MI3G50300101 | 1/4" MaleC x 1/8" FemaleC galvanised reduction |
| 11 | MI3G00100141 | 0-10 bar manometer |
| 12 | MI3G00528002 | Galvanised nipple 1/2" MaleC x 1/2" MaleC |
| 13 | 13572 | 1/2" outer threaded Geka coupling" |

| Pos. | Référence | Désignation |
|------|--------------|--|
| 14 | 90023 | Red handle valve M1/2" x F1/2" |
| 15 | MI3G00513002 | Galvanised T F1/2" x F1/2" x F1/2" |
| 16 | MI3G00904100 | Water pressure regulator 0,5 to . bar |
| 17 | MI3G00301300 | 1/2 Parker solenoid valve |
| 18 | MI3G01300201 | Water flow adjustment tap |
| 19 | 30137 | 1/2" mini lux valve |
| 20 | MI3G00553006 | Galvanised nipple 1/2" M-M length 60 mm |
| 21 | MI3G00509002 | 90° galvanised elbow 1/2" FemaleC x 1/2" FemaleC |
| 22 | MI3G01700300 | 3-piece union MF 1/2 |
| 23 | MI3G01600101 | Flowmeter fixing clamp |
| 24 | MI3G01100102 | Digital flow meter |
| 25 | 90868 | 3/4" MaleC x 1/2" MaleC high-pressure nipple |
| 26 | MI8002008004 | Mixing chamber water supply hose ø 18 Lg. 700 mm |