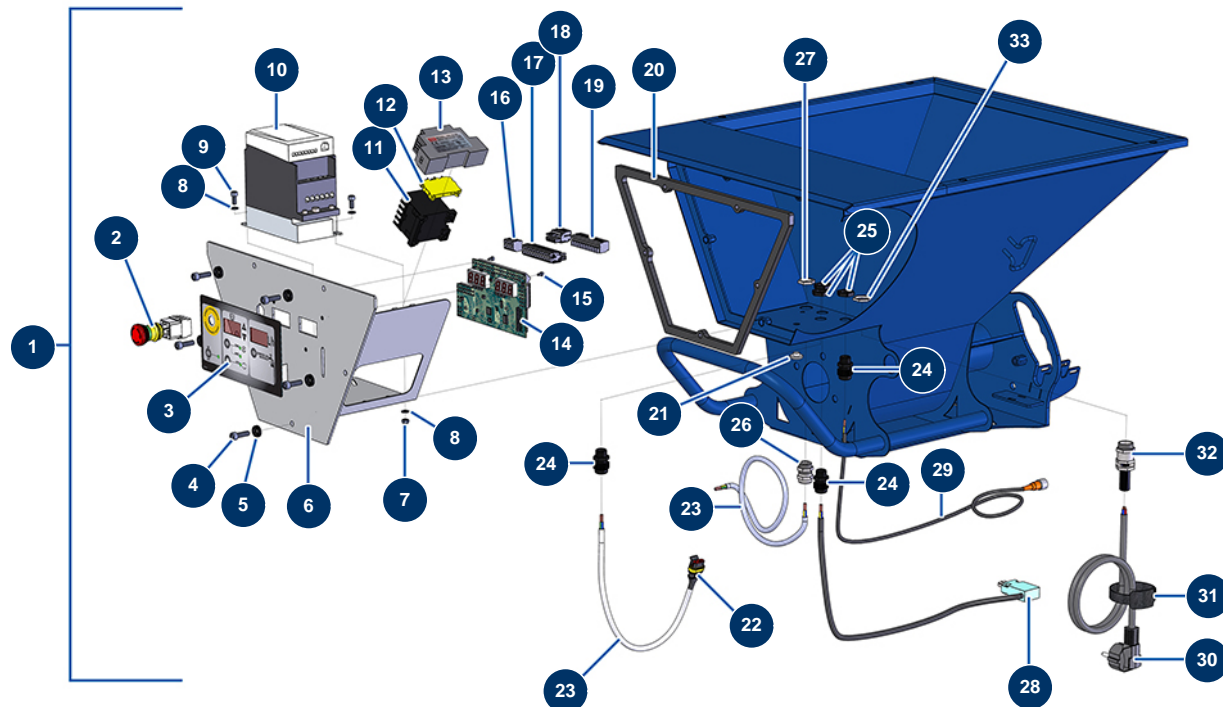


JETMIX 100 wireless + MIXPRO 70 atomizing set - MIXPRO 70 electrical box



Détails des pièces

| Pos. | Référence | Désignation |
|------|-----------|--|
| 1 | 13430 | Complete membrane electrical box for MIXPRO 70 |
| 2 | 13015 | Hanging EMERGENCY STOP button Ø16 |
| 3 | 13517 | MIXPRO 70 front with membrane |
| 4 | 90996 | 6 x 20 inox cylindrical head screw |
| 5 | 80573 | Hollow washer Ø 6 |
| 6 | C21225 | 6 |
| 7 | 11880 | M 5 nylstop nut |
| 8 | 70085 | ø 5 narrow washer |
| 9 | 90160 | 5 x 16 cylindrical head screw |
| 10 | 12098 | Inverter 230 V - 0,55 KW |
| 11 | 11918 | Coil contactor 24 Volt AC |
| 12 | 30038 | Yellow and green conductive block 6 mm² |
| 13 | 12711 | Supply 230V-24VDC-15W |

| Pos. | Référence | Désignation |
|------|-----------|---|
| 14 | 30653 | MIXPRO 70 mixer electronic card |
| 15 | 13329 | 3 x 6 cylindrical head screw |
| 16 | 12755 | 4-pin female connector |
| 17 | 11771 | 12 pins male connector |
| 18 | 12754 | 4-pin male connector |
| 19 | 11772 | 12 pins female connector |
| 20 | 13396 | EUROPRO MIXPRO 70 electrical box gasket |
| 21 | 80397 | Water exhaust cork for electrical box |
| 22 | 13434 | 3-way connector male spade |
| 23 | 30018 | H07RNF 4G1.5 electrical cable by the metre |
| 24 | 1002837 | PG 09 watertight cable gland |
| 25 | 1002838 | PG 9 cable gland nut |
| 26 | 30040 | Nickel plated watertight cable gland of 11 CEM |
| 27 | 30333 | Cable gland locknut of 11 CEM |
| 28 | 13431 | Limit safety sensor for MIXPRO 70 |
| 29 | 12409 | M12 straight female connector with 2m cable |
| 30 | 90180 | Supply cable with moulded plug 3G 1,5 mm ² |
| 31 | 12410 | Self-gripping collar with loop 12,7 x 228 mm |
| 32 | 80450 | cable gland for 11mm supply cable |
| 33 | 30060 | 11mm cable gland nut |